

NOTES:

1. MATERIAL: 6" CARBON STEEL PIPE. MTR'S AVAILABLE UPON REQUEST.
2. TOTAL BOLLARD HEIGHT SHALL BE PROVIDED BY CUSTOMER.

4x, $\phi .44$
THRU-HOLE

PLAN VIEW

SPECIFICATIONS:

PIPE SCHEDULE: 40 80

A-DIM.: _____

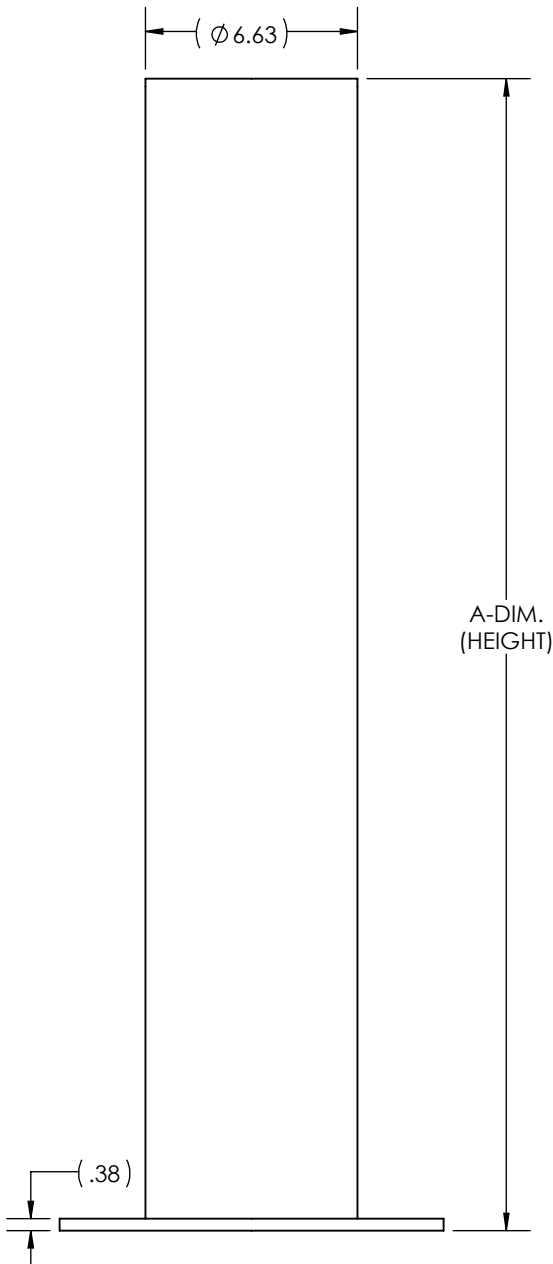
CAP STYLE: FLAT DOME

POWDER COAT COLOR:

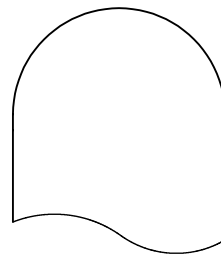
SAFETY YELLOW, RAL1023

JET BLACK, RAL 9005

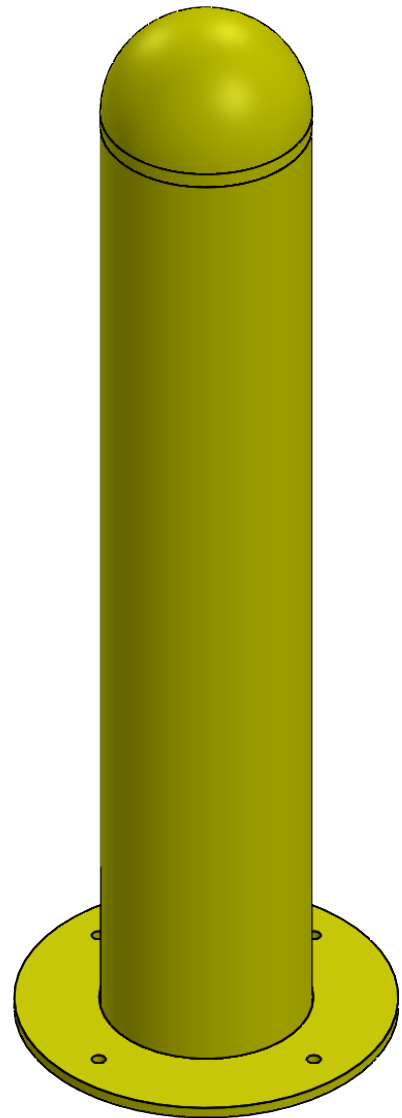
RAL#: _____



FLAT CAP



DOME CAP



ZUMA BOLLARDS

A 7/20/22

PRODUCT No. ZBB64CS

6" SURFACE MOUNT STEEL BOLLARD

DRAWN: MSG

DRAWN DATE: 7/20/22